



Meats & Processed Foods

**Meats & Processed
Foods Industry Startup
Guide**



Company Setup

- Incorporate company – Pvt Ltd / LLP / Partnership / OPC
- PAN, TAN, GST registration
- Udyam / MSME registration (for subsidies & benefits)
- Bank current account



Employee Registration & Social Compliance



- EPF Registration (mandatory for 20+ employees)
- ESIC Registration (mandatory for 10+ employees)
- Social Compliance Certifications (SA8000, SEDEX, BSCI)
- General Insurance & Group Insurance for employees and assets

Licenses & Regulatory Approvals



- FSSAI License** – Central or State (mandatory for meat & processed foods)
- Factory License – Labour Department
- Pollution Control Board Clearance (CTE & CTO)
- Fire NOC – Fire Department
- PESO License (if storing flammable chemicals, LPG, solvents)
- Weights & Measures / Packaging License
- Import-Export Code (IEC) – for export

Certifications



- ISO 9001 – Quality Management
- ISO 14001 – Environmental Management
- ISO 22000 / HACCP – Food Safety Management
- ISO 45001 – Health & Safety
- REACH / EU food compliance (for export)
- GMP / Halal / Kosher Certification (if required)
- Barcode & QR Code registration for products

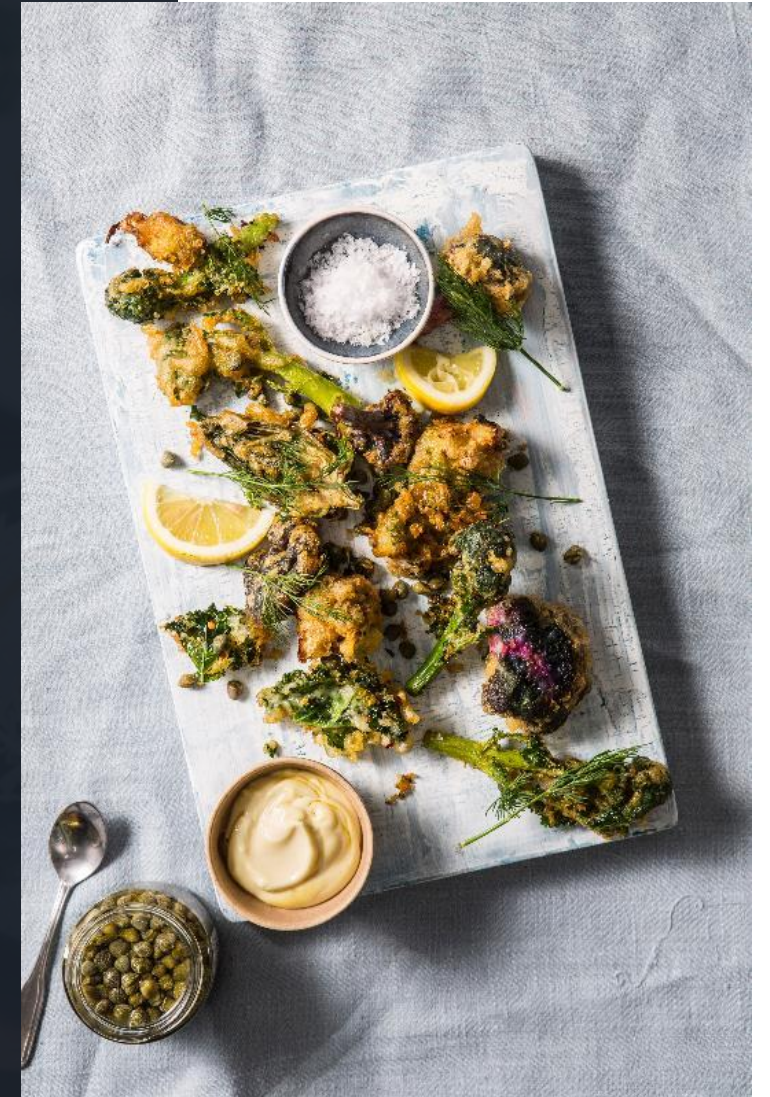
Digital Systems



- Website** – corporate profile, products, certifications, compliance
- ERP Software** – inventory, production, HR, quality, sales (SAP / Oracle / Zoho / Tally)

Plant & Machinery

- Slaughterhouse / Meat Processing Unit
- Meat Cutting, Grinding & Packaging Machines
- Freezers, Cold Storage, Blast Chillers
- Cooking & Processing Units for ready-to-eat foods
- Boilers, Steam Generators, Water Treatment Plant
- ETP / Wastewater Treatment
- Firefighting system & PPE



Testing Laboratory



- Microbiology Lab – Salmonella, E. coli, pathogens
- Chemical Lab – preservatives, additives, pH, moisture content
- Quality Lab – sensory testing, shelf-life analysis
- Food Safety Testing / HACCP / ISO 22000
- Effluent & Water Testing

Trainings

- Food Safety & Hygiene Training
- HACCP / ISO 22000 Awareness
- Handling Meat & Processed Food
- First Aid & Emergency Response
- Equipment Operation & Maintenance
- Social Compliance Awareness





Consultants

- Project & Engineering Consultant
- Environmental & Waste Management Consultant
- Food Safety & HACCP Consultant
- PESO & Fire Safety Consultant
- ISO / Certification Consultant
- Legal & IPR Consultant (Trademark, Patent, Copyright)
- ERP & Website Development Consultant
- HR & Social Compliance Consultant

- Incorporation Docs (COI, PAN, GST, IEC)
- EPF & ESIC certificates
- Insurance Policies (General, Group, Product Liability)
- Land Lease / Ownership Papers, Building Plan Approval
- Process Flow Diagram, MSDS (Food Additives, Chemicals)



Documents Required



- FSSAI License, Fire NOC, Pollution Clearance (CTE/CTO)
- Food Safety & HACCP / ISO Certificates
- REACH / EU Compliance (if export)
- Barcode & QR Code Registration
- Employee Training & Health Records



...
THANK YOU

Contact: +91 88022 91347
Email: priya.reg@gmail.com
Website: www.priyareg.com

